

Invia[®] NPWT Dressings

THERAPY CONFIDENCE WITH EASE



Therapy Confidence

- **Reliable** negative pressure delivery across the wound site¹
- **Intelligent** blockage detection¹ from pump to dressing
- **Secure**² tubing attachment with an audible click

Simplified Management

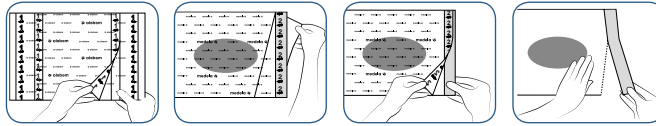
- **Convenient**² Quick-connecting tubing interface
- **Intuitive** transparent film handling
- **Easy** dressing application in difficult patient anatomy locations

Medela provides efficient solutions to support clinicians with Negative Pressure Wound Therapy management in all patient care settings.

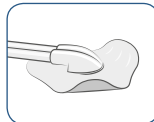
When using the dressing kits with FitPad in conjunction with the new Invia Negative Pressure Wound Therapy (NPWT) Systems, **be confident of the negative pressure delivered across the wound site**¹. Invia NPWT systems actively control set pressure at the wound site and adapt the flushing cycle to the amount of fluid in the tubing for optimal system performance.

Select the appropriate dressing **with ease** from our streamlined product offer. The dressing kits share the same transparent film and suction interface components; you only have to select the type of wound filler (foam or gauze) and the appropriate size.

Experience an **established application technique** thanks to the transparent film with intuitive markings.

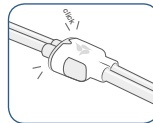
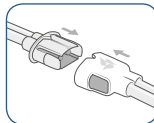


The **low profile design and flexible wings** of the suction interface (Invia FitPad) allow appropriate placement in difficult anatomic locations.



Overall height
8.5 mm
Wing thickness
0.45 mm

The **Quick-connecting** interface between the dressing tubing and canister tubing provides an **easy and secure attachment**².



Key features at a glance

- Active exudate management and pressure control from the pump to the wound site
- Easy application of transparent film and external suction interface
- Convenient and secure tubing attachment with the Quick-connector
- Streamlined foam and gauze dressings offer

Technical data

| | |
|---|--|
| Foam Reticulated polyether and polyurethane, hydrophobic material | Pore size: 600–800 microns |
| | Tensile strength: 20 PSI/138 kPa <small>PSI: Pounds per Square Inch</small> |
| Transparent Film Polyurethane film with acrylic adhesive | Size: 26 cm x 32 cm |
| | MVTR: 385 g/m ² /day <small>MVTR: Moisture Vapor Transmission Rate</small> |

Invia foam or gauze dressings are intended to be used in conjunction with the Invia Negative Pressure Wound Therapy (NPWT) Systems to deliver negative pressure to the wound.

Find out more about Medela NPWT Portfolio at www.medela-healthcare.us

CAUTION: U.S. Federal law restricts this device to sale by or on the order of a physician.

Medical Vacuum Technology
for Healthcare Professionals

Please contact us or your local Medela representative for details.

Medela, Invia, and Invia FitPad are registered in the US Patent and Trademark Office. No trademark registrations in Canada.

AMD and Kerlix are trademarks of Covidien. 3M Cavilon No Sting and Tegaderm Non-Adherent Contact Layer are trademarks of 3M Healthcare. Hy•Tape is a registered trademark of Hy•Tape International. Coloplast is a registered trademark of Coloplast A/S.

Local contact



SPECIALTY MEDICAL PRODUCTS, INC.

Billing: 50 Pennsylvania Ave Malvern, PA 19382
Shipping: 187 Pennsylvania Ave Malvern, PA 19382
Phone: (888) 698-1522 **Fax (610) 644-3992**
Email: info@smpcares.com
Website: www.smpcares.com

Medela AG
Lättichstrasse 4b
6341 Baar, Switzerland
www.medela.com

USA
Medela Inc. USA
1101 Corporate Drive
McHenry, Illinois 60050
USA
Phone +1 877 735 1626
Fax +1 815 307 8942
info-healthcare@medela.com
www.medela-healthcare.us

Canada
Medela Canada Inc.
4160 Sladeview Cres., Unit #8
Mississauga, Ontario, L5L 0A1
Canada
Phone +1 800 435 8316
Fax +1 800 995 7867
info@medela.ca
www.medela.ca

¹ Performance data on file at Medela AG
² Usability Validation data on file at Medela AG